



MDB master interface for PayCon II

Attention!!

Read this manual carefully before installing this device!

Main connection

Before connecting the device to the mains, check if the mains supply voltage corresponds to the voltage printed on the type plate of the adapter. If the mains voltage is different, consult your supplier.

Guarantee

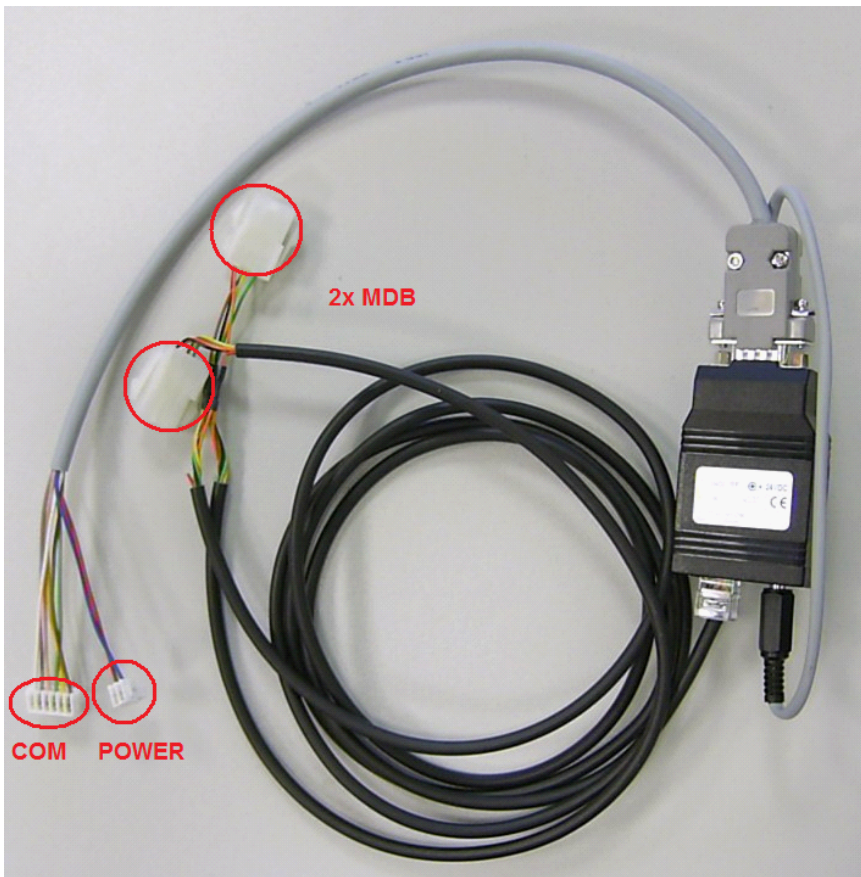
No guarantee can be given if safety regulations are not followed.

Security

Always disconnect the power supply before handling anything inside the device.

Installation

This device has to be installed by authorised personal only.

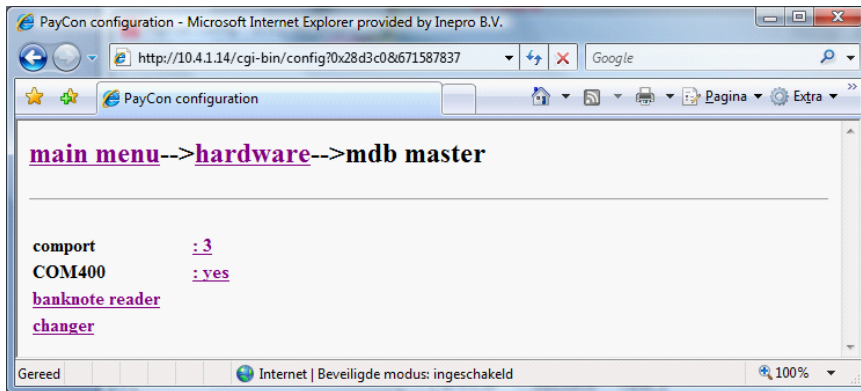


1. Connect cabling as in above picture.
2. Connect the power connector to the J23 / PWR DC connector of the PayCon.
3. Connect the COM connector to the RS232 connector of the PayCon (COM1, 2, 3, 9 or 10).



4. Connect the MDB device(s) to the MDB connector(s).
5. Attach the COM400 module with supplied self-adhesive tape to the vending machine or the PayCon.

! The PayCon supplies the power to connected the MDB devices, so the PayCon must be powered with 24V (f.e. from the vending machine).



6. Make settings as above in the PayCon (supported with firmware 4.10 and above)

! The COM port setting should be correspond with the connected COM port.

7. Set up the connected devices (the banknote reader and the changer are supported devices).