

The logo for Inepro, featuring the word "inepro" in white lowercase letters with a registered trademark symbol (®) on a red rectangular background.

inepro®

A large, semi-transparent red diamond shape containing the text "Maintenance Tool - Update Tool" in white, centered within the diamond.

Maintenance Tool -
Update Tool

Operator Manual | Maintenance Tool - Update Tool

© 2019 Inepro B.V. All rights reserved

Maintenance Tool - Update Tool

Congratulations on your selection of the Inepro Maintenance Tool - Update Tool. We are certain you will be pleased with your purchase of one of .

We want to help you get the best result from your Maintenance Tool - Update Tool. This manual contains information on how to do that; please read it carefully. Due to continuous product improvements this manual is subject to changes without notice.

We strongly recommend you read the license agreement to fully understand its coverage and your responsibilities of ownership.

Your Inepro dealer is dedicated to your satisfaction and will be pleased to answer your questions and your concerns.

*Best wishes,
Inepro BV.*

All rights reserved. No parts of this work may be reproduced in any form or by any means - graphic, electronic, or mechanical, including photocopying, recording, taping, or information storage and retrieval systems - without the written permission of the publisher.

Products that are referred to in this document may be either trademarks and/or registered trademarks of the respective owners. The publisher and the author make no claim to these trademarks.

While every precaution has been taken in the preparation of this document, the publisher and the author assume no responsibility for errors or omissions, or for damages resulting from the use of information contained in this document or from the use of programs and source code that may accompany it. In no event shall the publisher and the author be liable for any loss of profit or any other commercial damage caused or alleged to have been caused directly or indirectly by this document.

Revision number R 0. This revision of the manual can be applied to products with version 4.10 or higher.

Publisher

Inepro B.V.

Managing Editor

K. de Graaf

Technical Editors

K. de Graaf

Cover Design

H. Wagenaar

K. de Graaf

Team Coordinator

R. Groen

Production

Inepro B.V.

Table of Content

- PayCon Update Tool** **1**
- 1 The PayCon Firmware** **2**
- 2 What is a PayCon bundle?** **3**
- 3 What is the Update Tool?** **3**
- 4 How does the Update Tool work?** **3**
- 5 How to use the Update Tool?** **3**
- 6 Troubleshooting** **6**
- End User Licence Agreement** **I**

PayCon Update Tool

Part

PayCon Update Tool

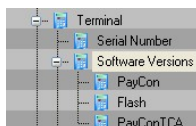
The PayCon firmware

The firmware of the PayCon consists out of 2 main objects. The PayCon firmware version, and the version of the flash software.

The flash firmware version is comparable with the version / service pack of your operating system on your PC.

The PayCon firmware version is comparable with the version / service packs of for example your Acrobat Reader.

To know the firmware version of your PayCon-2 there are 2 important parameters to be read out. These parameters can be read with a Read-Only card, an Administrator Card or with a Service card.



The 2 most important values are:

- PayCon: xxxx
- Flash: yyyy

Depending on the versions of PayCon firmware and flash different methods are required:

Updating a PayCon with PayCon firmware above 3700

To update the PayCon-firmware of this PayCon you need:

- PayCon Update Tool (obsolete) or PayCon Config Tool
- Firmware bundle

On the partner zone of the download area of the Inepro web site you can always find the latest versions of the Tool and the bundles. On the download page of the Config Tool there is also a manual which describes how to perform the update.

Updating a PayCon with PayCon firmware prior to version 3700

Updating a PayCon with PayCon firmware prior to version 3700


These PayCons can not be updated by the Update Tool.

In order to update these PayCons one of the following procedures are possible:

- An Inepro employee can perform the update on site
- The PayCon can be sent towards our headquarters to perform the update

Updating the flash version of your PayCon-2

The PayCon flash firmware version is comparable with the version / service packs of for example your Operating System. Therefore updating the flash firmware of the PayCon is not supported in the field. Should a firmware update be mandatory to be able to connect to a specific photocopier, or for specific PayCon functionalities the PayCon units have to be sent to the Inepro headquarters to perform this update.

 Although updating your PayCon-2 system is an easy operation we do recommend not updating your PayCon, unless you have a specific need which is available in the newer firmware release.

Inepro can never be held responsible when certain functionalities should not work anymore after performing any kind of firmware upgrade.

What is a PayCon bundle?

What is a PayCon bundle?

A PayCon firmware bundle is a package of files which can be used to perform a PayCon firmware upgrade. In order to perform a firmware upgrade, all the files of 1 bundle should be placed into 1 folder. Then using the Update Tool these files can be uploaded towards the PayCon.

With a bundle it is not possible to update the flash version of the PayCon firmware.

What is the Update Tool?

The PayCon-2 Update Tool gives you an easy way to update the firmware of your PayCon terminal. The Update Tool is windows based and can update 1 or more PayCon systems at once.

How does the Update Tool work?

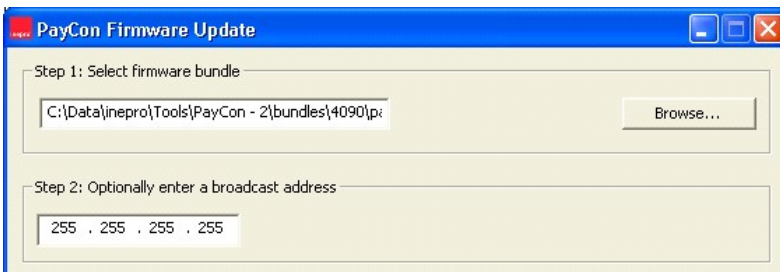
The Update Tool uses firmware bundles to update the PayCon firmware. These bundles can be downloaded from the partner zone from the Inepro web site.

How to use the Update Tool?

Follow the steps below to update the firmware of a PayCon via the Update Tool.

Step 1 select firmware bundle:

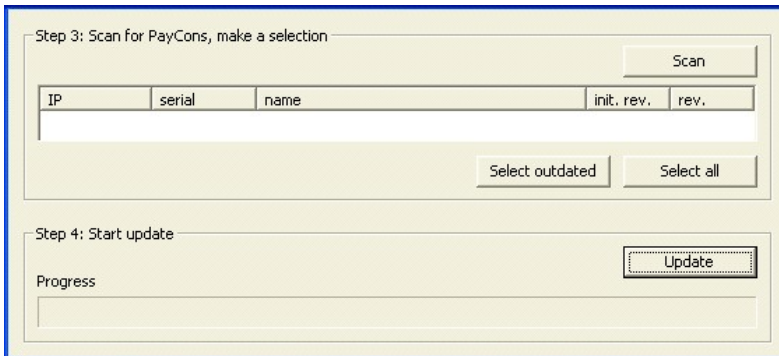
Start the PayCon Update Tool. The following screen will be shown:



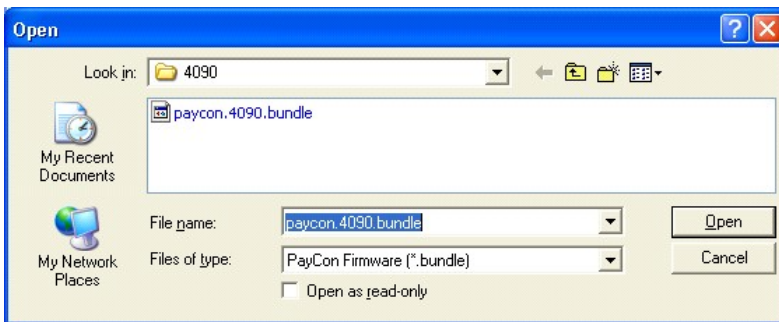
The screenshot shows a Windows-style window titled "PayCon Firmware Update". It contains two main sections for user input:

- Step 1: Select firmware bundle**: A text input field contains the path `C:\Data\inepro\Tools\PayCon - 2\bundles\4090\p...`. To the right of the field is a "Browse..." button.
- Step 2: Optionally enter a broadcast address**: A text input field contains the IP address `255 . 255 . 255 . 255`.

PayCon Update Tool



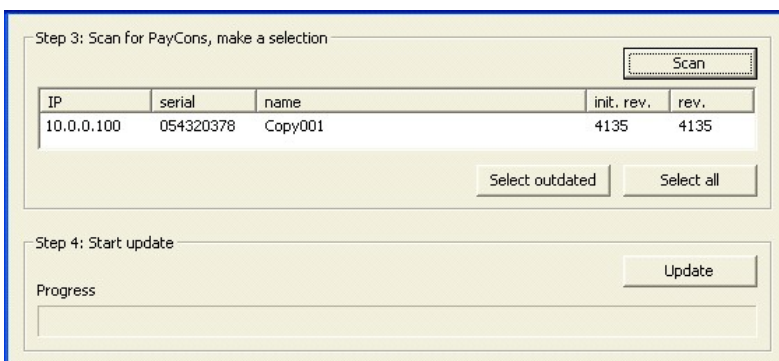
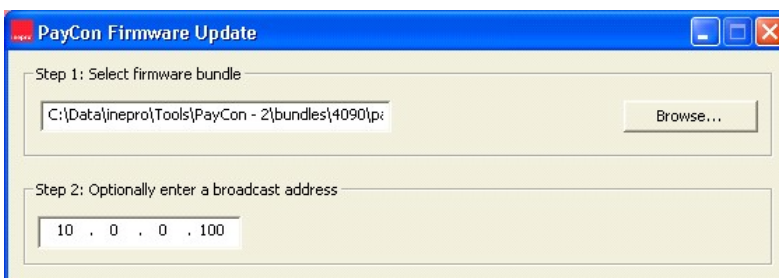
Select the [Browse...] button to open an explorer window where you can navigate to the firmware bundle of your choice.



Highlight the desired firmware bundle and select the [Open] button to load this firmware.

Step 2 enter subnet mask:

Enter the subnet mask where the Update Tool should search for available PayCons, then press [Scan]. A complete listing of all the PayCons in this range will appear.



How to use the Update Tool?

Step 3 select PayCons to update:

Using the [Select outdated] button will select all PayCons in your view with a firmware version earlier than the firmware you have chosen in Step 1.

Using the [Select all] button you can select all PayCons visible in this view.

You can click on the column headers to sort the PayCons in the view by this column.

The column "init. rev." is the initial revision which was burnt into the PayCon upon first shipment.

The column "rev." contains the current PayCon firmware version.

Step 4 perform update:

Press the [Update] button to update all selected PayCons in your view. PayCons will be update one at a time.

Remarks:

Never update the firmware of your PayCons when users are still using the system.

PayCon Update Tool

Troubleshooting

My PayCons do not appear in the Update Tool.

When the PayCons do not appear when browsing for them, first check whether you have a firewall blocking this kind of communication. When the PayCons still do not appear in the view, refine your browse address to search more specific to your PayCon systems.

END-USER LICENSE AGREEMENT
INEPRO BACK OFFICE SUITE BY INEPRO BV

THE PROGRAM IS COPYRIGHTED AND LICENSED (NOT SOLD). BY PURCHASING THE PROGRAM, YOU ARE ACCEPTING AND AGREEING TO THE TERMS OF THIS LICENSE AGREEMENT. THIS LICENSE AGREEMENT REPRESENTS THE ENTIRE AGREEMENT CONCERNING THE PROGRAM, BETWEEN YOU AND INEPRO BV, (REFERRED TO AS "LICENSOR"), AND IT SUPERSEDES ANY PRIOR PROPOSAL, REPRESENTATION, OR UNDERSTANDING BETWEEN THE PARTIES.

1. License Grant. Licensor hereby grants to you, and you accept, a nonexclusive license to use the program in machine-readable, object code form only, for use only as authorized in this License Agreement. The Programs may be used only on computers owned, leased or otherwise controlled by you. The program shall only manage the number of devices specified in the purchase agreement. You agree that you may not reverse assemble, reverse compile, or otherwise translate the Program.
2. Term (Demo Version Only). This License commences upon the installation of the software and is effective for 90 days following the date you install the software. This License terminates automatically without notice from Inepro BV upon the expiration of the evaluation term or if you fail to comply with any provision of this License. Upon termination you shall remove the SOFTWARE from your computer(s).
3. Licensor's Rights. You acknowledge and agree that the Program is proprietary to Licensor and protected under copyright law. You further acknowledge and agree the all right, title, and interest in and to the Program, including associated intellectual property rights, are and shall remain with Licensor. The License Agreement does not convey to you an interest in or to the Program, but only a limited right of use revocable in accordance with the terms of this License Agreement.
4. No Warranty; Limitation of Liability. YOU ACKNOWLEDGE THAT THE PROGRAM IS PROVIDED ON AN "AS IS" BASIS WITHOUT WARRANTY OF ANY KIND. LICENSOR MAKES NO REPRESENTATIONS OR WARRANTIES REGARDING THE USE OR PERFORMANCE OF THE PROGRAM. LICENSOR EXPRESSLY DISCLAIMS THE WARRANTIES OF MERCHANTABILITY AND FITNESS FOR A PARTICULAR PURPOSE. LICENSOR SHALL HAVE NO LIABILITY TO CUSTOMER OR ANY THIRD PARTY FOR ANY LOSS OR DAMAGE CAUSED, DIRECTLY OR INDIRECTLY, BY THE PROGRAM, INCLUDING, BUT NOT LIMITED TO, ANY INTERRUPTION OF SERVICES, LOSS OF BUSINESS, LOSS OF DATA OR SPECIAL, CONSEQUENTIAL OR INCIDENTAL DAMAGES.
5. Severability. Should any term of this License Agreement be declared void or unenforceable by any court of competent jurisdiction, such declaration will have no effect on the remaining terms hereof.
6. No Waiver. The failure of either party to enforce any rights granted hereunder or to take action against the other party in the event of any breach hereunder shall not be deemed a waiver by that party as to subsequent enforcement of rights or subsequent actions in the event of future breaches.
7. Update Checks. You acknowledge and agree to allow Inepro Back Office Suite version and license status details to be sent to Inepro BV when you request to "Check for updates". This allows the Inepro Back Office Suite software to determine whether software updates are available in real-time.
8. Service. Licensor will utilize its best efforts to maintain acceptable performance of services, but Licensor makes absolutely no warranties whatsoever, express or implied, including warranty of merchantability or fitness for a particular purpose. Licensor cannot guarantee continuous service, service at any particular time, or integrity of data stored or transmitted via its system or via the Internet.
9. Data. Licensor will not be liable for the inadvertent disclosure of, corruption or erasure of data transmitted or received or stored on its system. Licensor shall not be liable to Licensee or any of its customers for any claims or damages which may be suffered by Licensee or its customers, including, but not limited to, losses or damages of any and every nature, resulting from the loss of data, inability to access the Software, or inability to transmit or receive information, caused by, or resulting from, delays, nondeliveries, or service interruptions whether or not caused by the fault or negligence of Licensor.

INDEX

- F -

Firmware Update

- Bundle 3
- Prior to version 3700 2
- Version 3700 and up 2

- P -

PayCon

- Bundle 3
- Firmware 2
- Firmware bundle 3
- Flash 2
- Scan for 3

- U -

Update Tool

- How does it work? 3
- Scan for Paycons 3
- What is the 3

